

# Utility Software (VHJ) for HV-770SX/7100SX/7600SX Instruction Manual

Image Mate Ver.1.00

ELMO TWAIN DS Ver.1.00

for Windows® 98/2000/Me/XP

## Preparation

### Installing the USB driver

For using the Image Mate (VHJ) and the ELMO TWAIN DS (VHJ), the USB driver must be installed in your computer correctly. If the USB driver is not installed, install it according to the Utility Software installation manual.

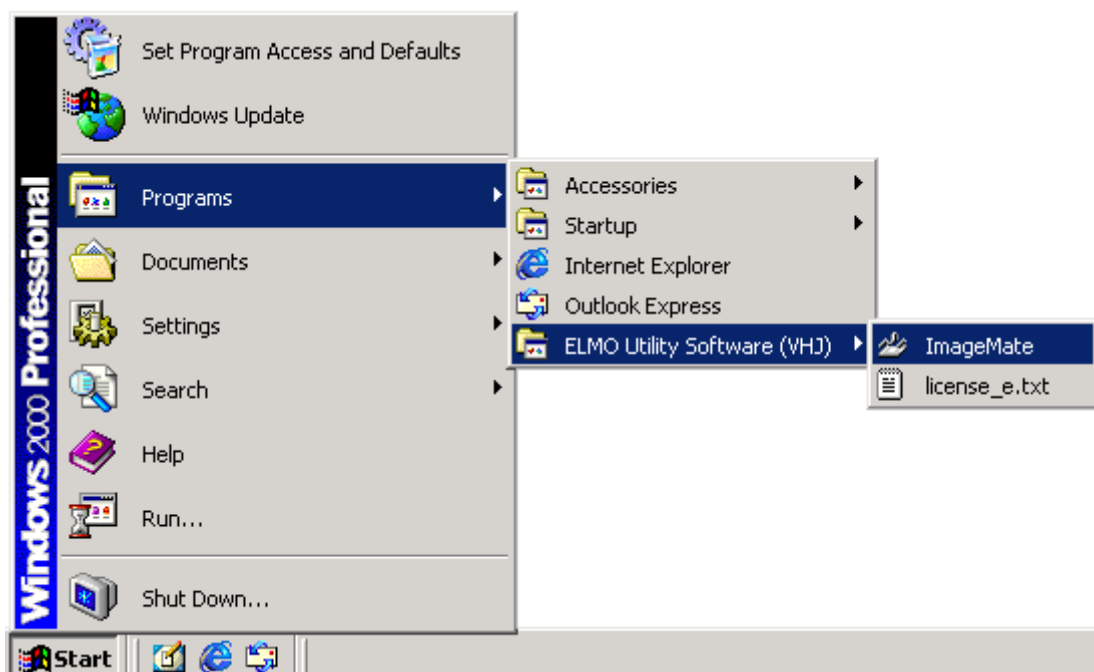
### Connecting the Visual Presenter to a computer

Connect the Visual Presenter (hereafter the main unit) to a computer with the supplied USB cable, then turn on the power for the main unit.

## Starting the [Image Mate] application.

### Starting the application

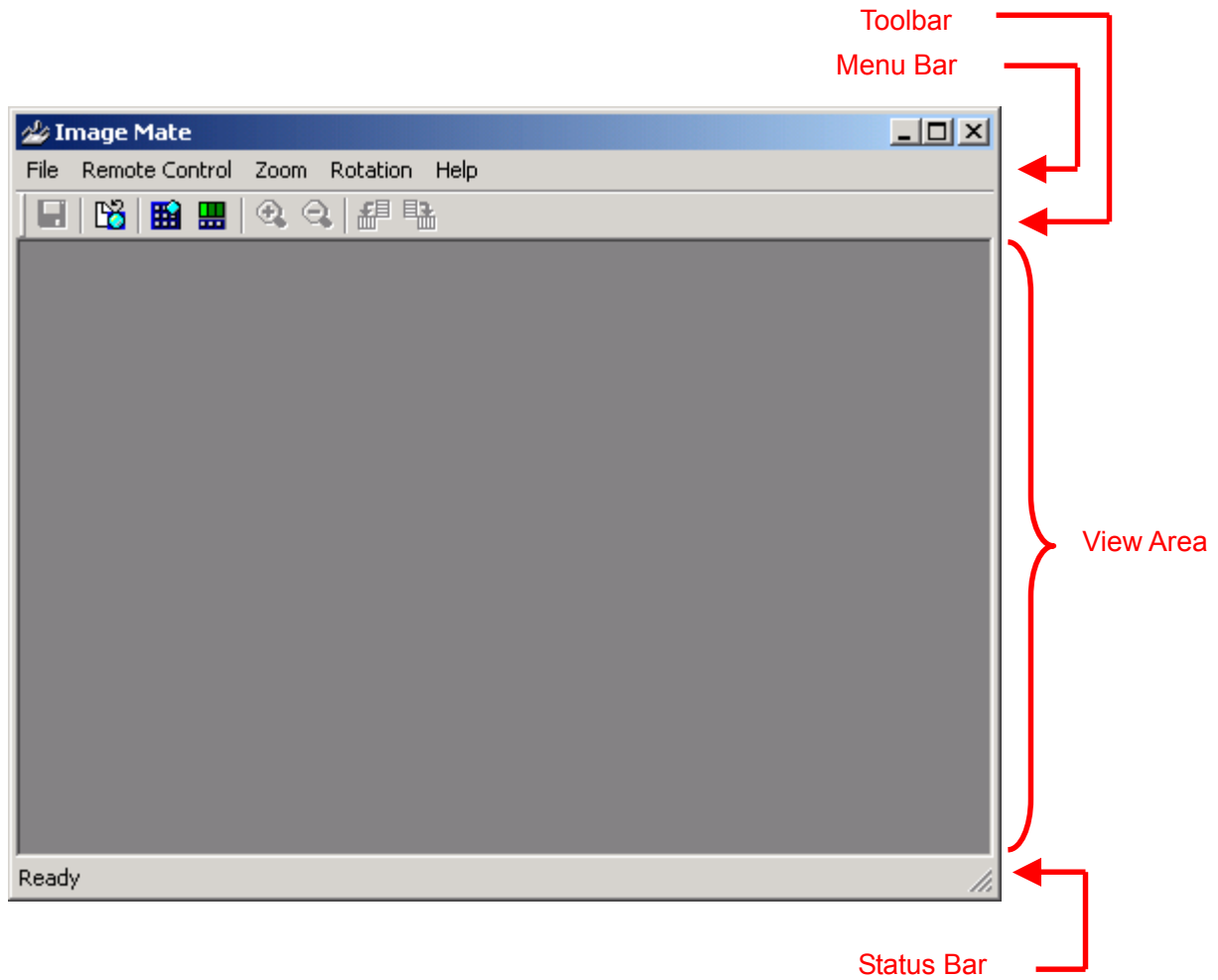
Select [Programs] > [ELMO Utility Software (VHJ)] > [ImageMate] in the Start Menu of Windows.



\*\*\* The Image Mate (VHJ) and the ELMO TWAIN DS (VHJ) cannot be used simultaneously.

## Main Window

When the application starts, the following Main Window appears.



**Menu Bar**

The Menu Bar contains all the functions to be used in the application.

File Remote Control Zoom Rotation Help

**File**

Save...	Save the image displayed in the View Area as a file.
Capture	Capture a new image from the main unit.
Exit	Quit the Application.

**Remote Control**

Lens Controller	Show or Hide the Lens Controller.
Input Selector	Show or Hide the Input Selector

**Zoom**

Zoom In	Enlarge the image displayed in the View Area.
Zoom Out	Reduce the image displayed in the View Area.
Best Fit	Adjust the image to fit the window.
Actual Size	Adjust the image to its actual size (100%).

**Rotation**

Rotate Left	Rotate the image displayed in the View Area 90 degrees to the left.
Rotate Right	Rotate the image displayed in the View Area 90 degrees to the right.

**Help**

About Image Mate...	Display the version and the copyright of the application.
---------------------	---

## Toolbar

The Toolbar contains the frequently used functions in the Menu Bar.



Save the image displayed in the View Area as a file.



Capture a new image from the main unit.



Show or Hide the Lens Controller.



Show or Hide the Input Selector.



Enlarge the image displayed in the View Area.



Reduce the image displayed in the View Area.

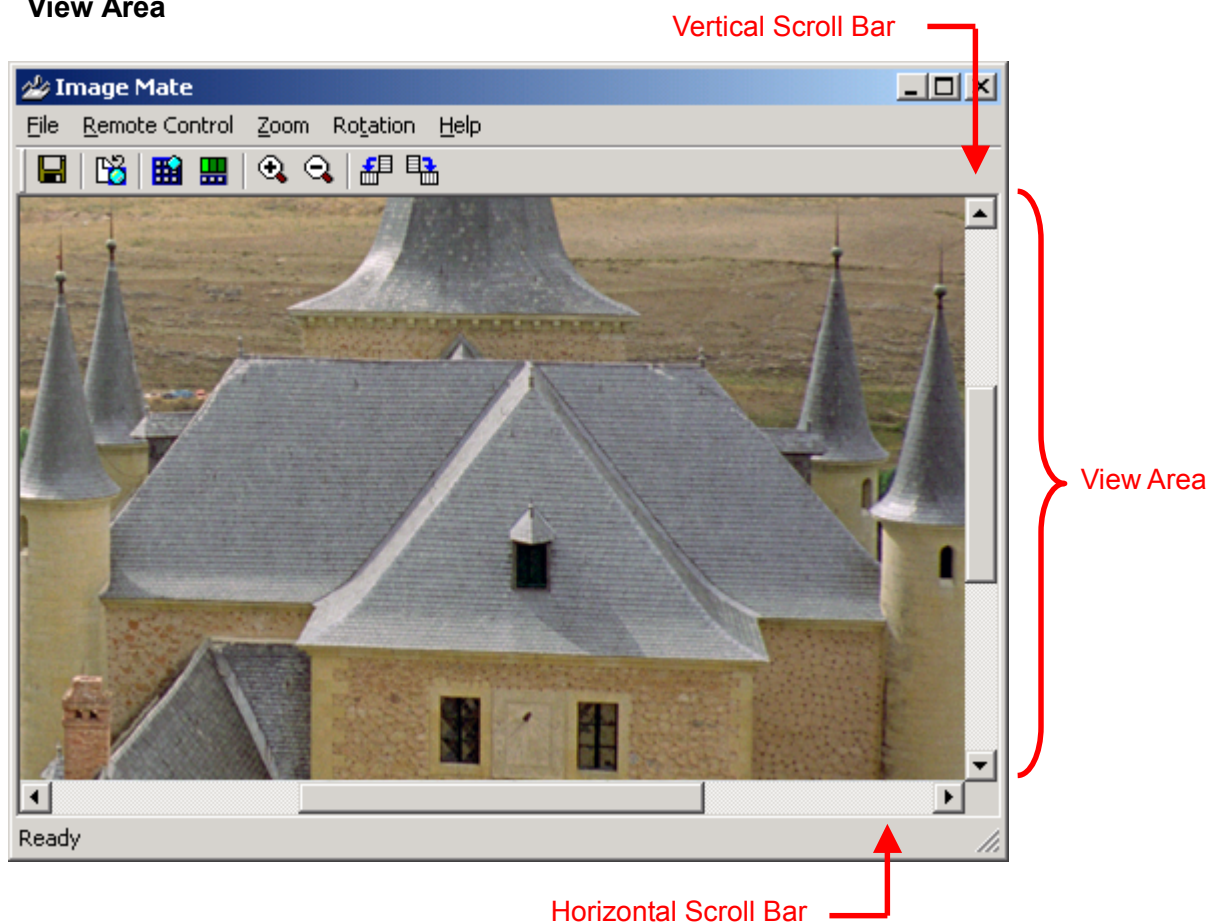


Rotate the image displayed in the View Area 90 degrees to the left



Rotate the image displayed in the View Area 90 degrees to the right.

## View Area



The captured image is displayed in the View Area. If the captured image is larger than the View Area, the Horizontal Scroll Bar and the Vertical Scroll Bar appear automatically.

**Status Bar**

The Status Bar displays the status of the application and information about the Toolbar button and the menu item pointed with the mouse.



The message "Not Ready" means no connection between the main unit and the computer, or the USB driver is not installed correctly.

## Capturing a new image from the [Visual Presenter]


### Capturing a new image

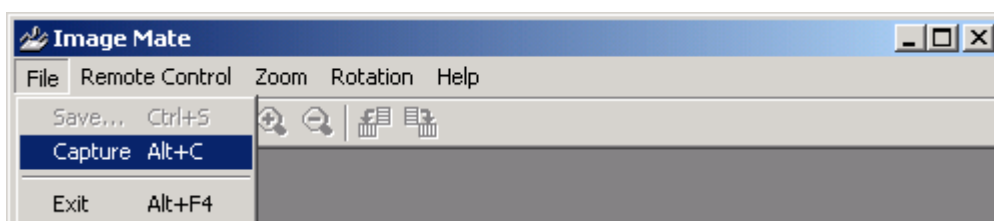
This function can capture a new image from the camera of the [Visual Presenter].

In the SXGA mode, the captured image is 1525 pixels wide by 1220 pixels high. When the image is rotated by 90 or 270 degrees, the captured image is 1220 pixels wide by 1525 pixels high.

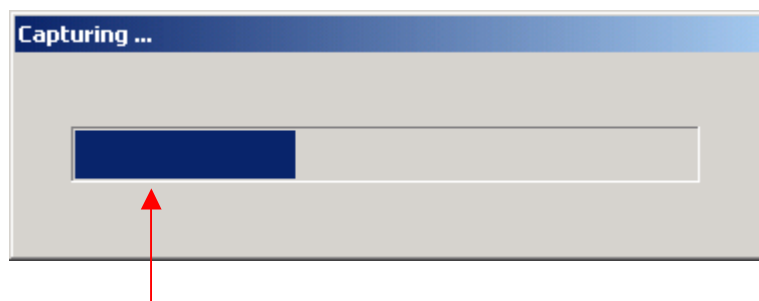
In the XGA mode, the captured image is 1600 pixels wide by 1200 pixels high. When the image is rotated by 90 or 270 degrees, the captured image is 1200 pixels wide by 1600 pixels high.

The menu and cursor will not be captured.

1. Check that the Status Bar says "Ready"  
When messages other than "Ready" appear, a new image cannot be captured.
2. Select the  [Capture] button in the Toolbar or [File] > [Capture] in the Menu Bar.



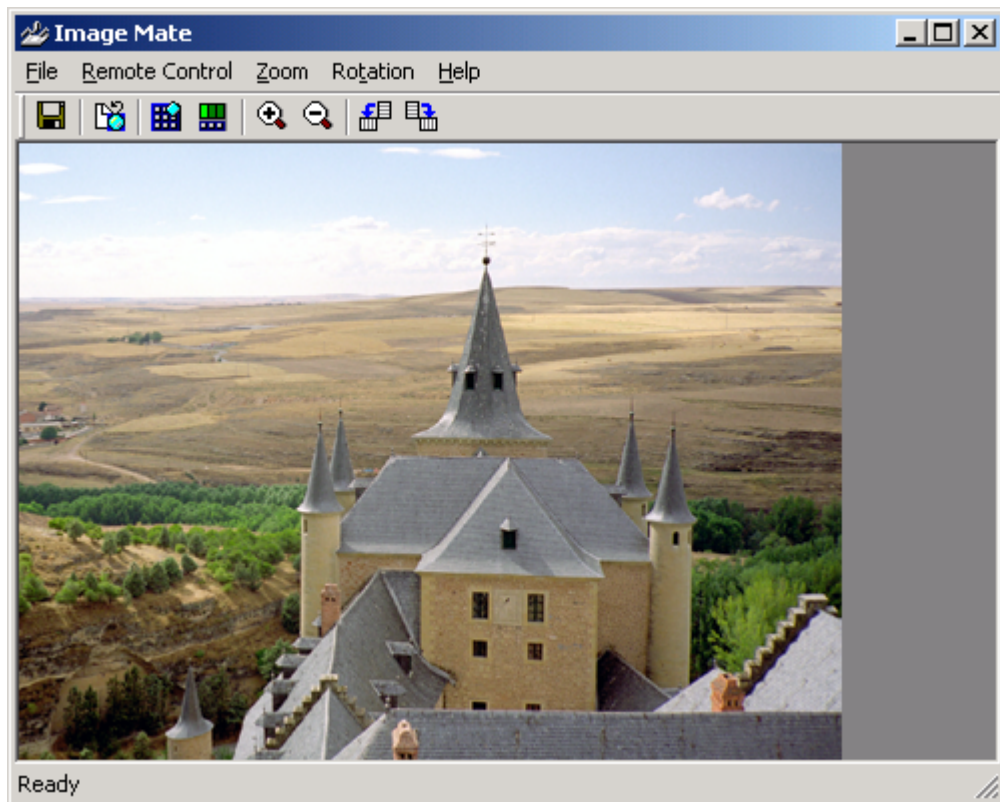
3. Capturing starts. The message "Busy" is displayed in the Status Bar and the [Capturing...] dialog will appear. The Progress Bar indicates the status of capturing the image.



Progress Bar

- \*\*\* While a new image is being captured, other functions cannot be used.
- \*\*\* Do not turn off the power for the main unit or disconnect the USB cable while a new image is being captured.
- \*\*\* A still image in the pause mode of the main camera will not be captured.

4. After capturing, the captured image will be displayed to fit the View Area.




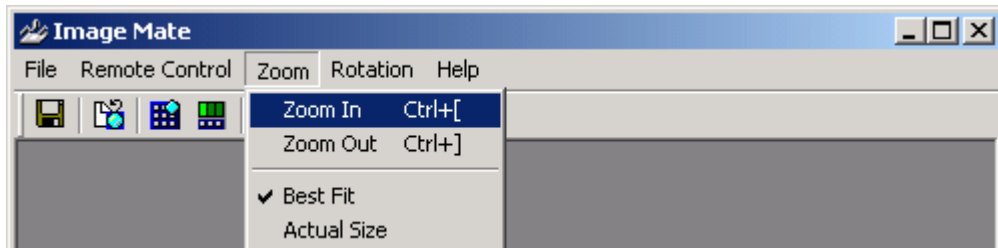


## Zooming in / out the image in the View Area

### Zooming in (enlarging) the image


This function can zoom in (enlarge) the image up to 1600% in the View Area.

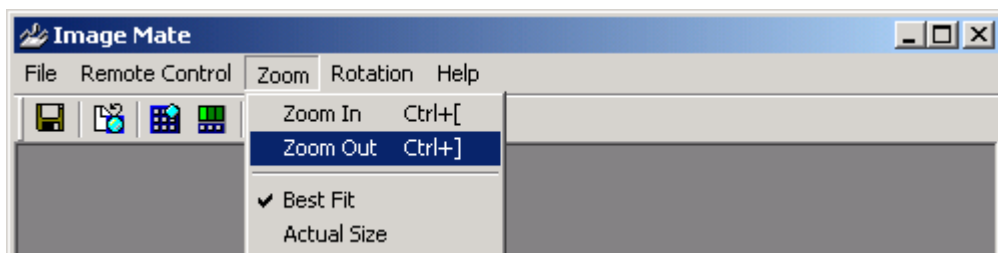
1. Select the  [Zoom In] button in the Toolbar or [Zoom] > [Zoom In] in the Menu Bar.  
While zooming in, the center of the picture remains fixed, but when the whole image is displayed in the View Area, the center is not fixed.



### Zooming out (reducing) the image

This function can zoom out (reduce) the image down to 6.25% in the View Area.

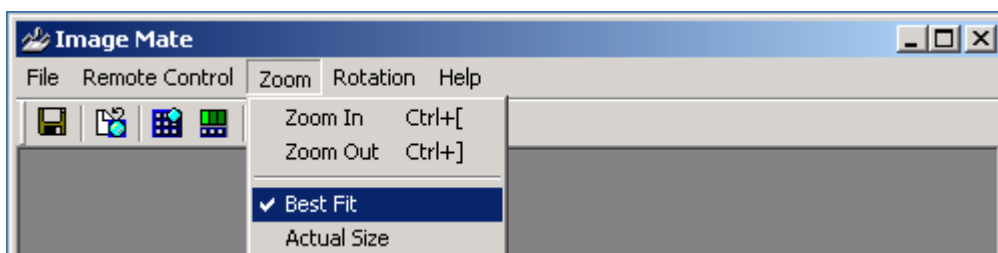
1. Select the  [Zoom Out] button in the Toolbar or [Zoom] > [Zoom Out] in the Menu Bar.  
While zooming out, the center of the picture remains fixed, but when the whole image is displayed in the View Area, the center is not fixed.



### Adjusting the image to fit the window

This function can adjust the captured image to fit the window.

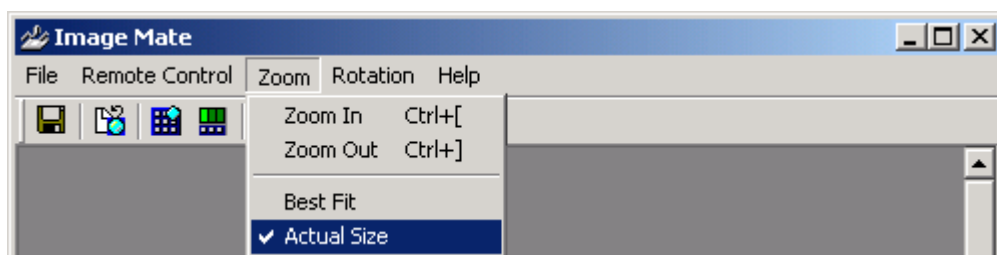
1. Select [Zoom] > [Best Fit] in the Menu Bar.  
After capturing, the state of the Zoom will be the Best Fit.



### Adjusting the image to its original size

This function can adjust the captured image to its original size.


1. Select [Zoom] > [Actual Size] in the Menu Bar.

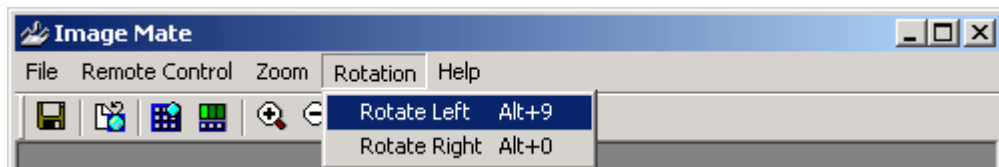


## Rotating the image in the View Area

### Rotating the image 90 degrees to the left


This function can rotate the captured image 90 degrees to the left.

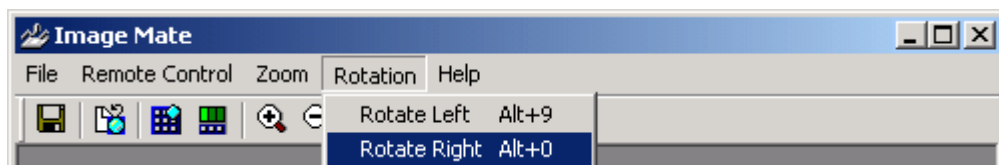
1. Select the  [Rotate Left] button in the Toolbar or [Rotation] > [Rotate Left] in the Menu Bar.



### Rotating the image 90 degrees to the right

This function can rotate the captured image 90 degrees to the right.

1. Select the  [Rotate Right] button in the Toolbar or [Rotation] > [Rotate Right] in the Menu Bar.



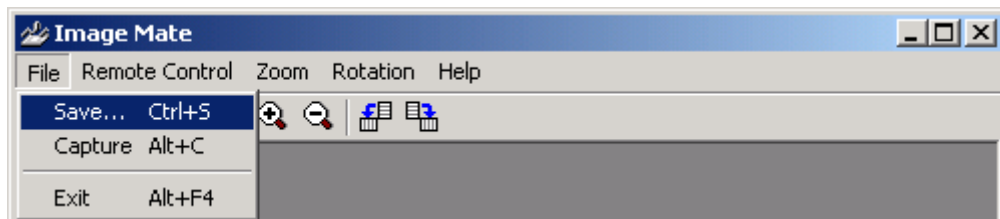
\*\*\* After rotating the image, the state of the Zoom will return to the Best Fit.

## Saving the image

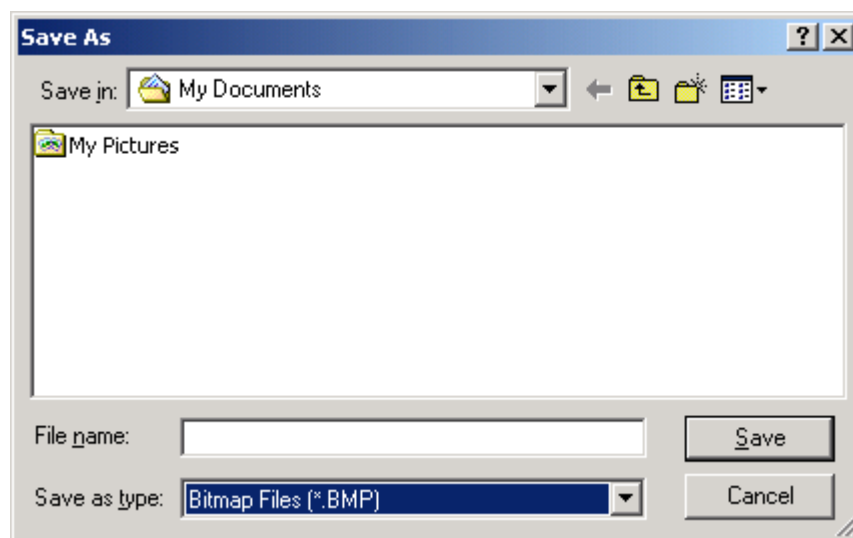
### Saving the image

This function can save the captured image as a file in the Windows bitmap format.

1. Select the  [Save] button in the Toolbar or [File] > [Save ...] in the Menu Bar.



2. The dialog "Save As" appears.  
Determine the location you want to save the file and its name.




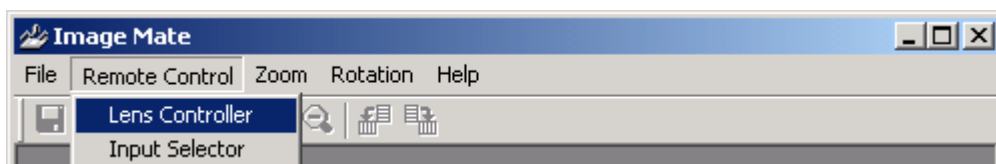
Click the [Save] button to save as a file or the [Cancel] button to cancel it.

## Remote Control

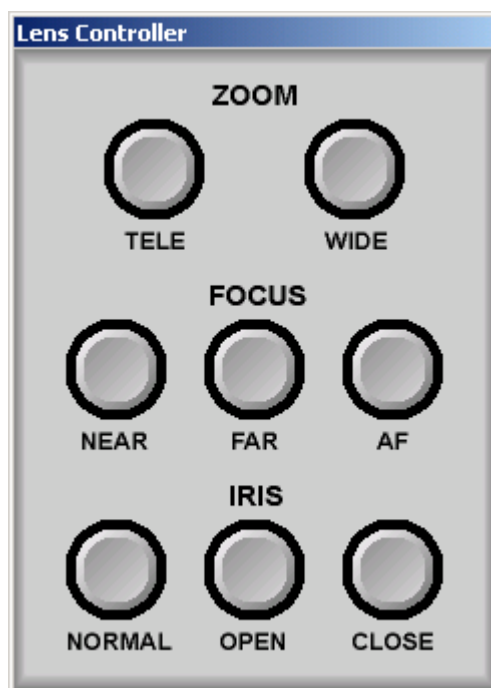
The main unit can be controlled from within the application via the Lens Controller and the Input Selector. Check that the Status Bar says “Ready”. When messages other than “Ready” appear, it is not possible to display the Lens Controller and the Input Selector.

### Displaying the Lens Controller

1. Select the  [Show / Hide the Lens RC] button in the Toolbar or [Remote Control] > [Lens Controller] in the Menu Bar. For hiding the Lens Controller, toggle the same button or the same menu item.




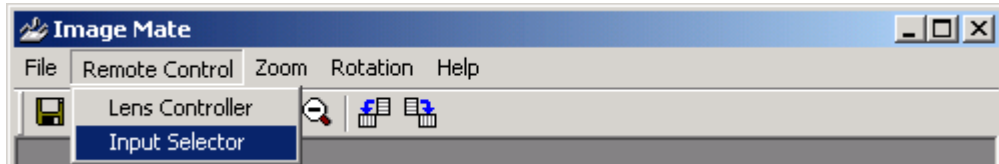
2. The Lens Controller appears.



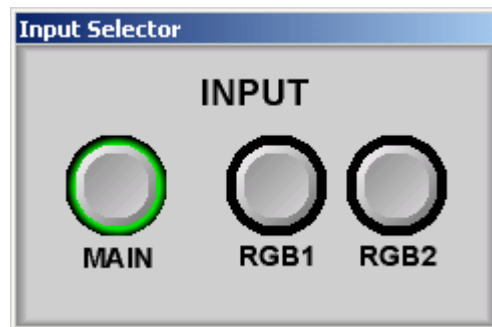
- ZOOM** : [TELE], [WIDE] buttons  
Click on the [TELE] / [WIDE] button to adjust the zoom of the lens.
- FOCUS** : [NEAR], [FAR], [AF] buttons  
Click on the [NEAR] / [FAR] button to adjust the focus of the lens.  
Click on the [AF] button to adjust the focus of the lens automatically.
- IRIS** : [NORMAL], [OPEN], [CLOSE] buttons  
Click on the [OPEN] / [CLOSE] button to adjust the auto iris level of the lens.  
Click on the [NORMAL] button to resume the initial setting of the auto iris level.

## Displaying the Input Selector

1. Select the  [Show / Hide the Input RC] button in the Toolbar or [Remote Control] > [Input Selector] in the Menu Bar. For hiding the Input Selector, toggle the same button or the same menu item.



2. The Input Selector appears.



INPUT [MAIN], [RGB1], [RGB2] buttons

Click on the button that corresponds to the desired input source to change the signal received by the main unit.

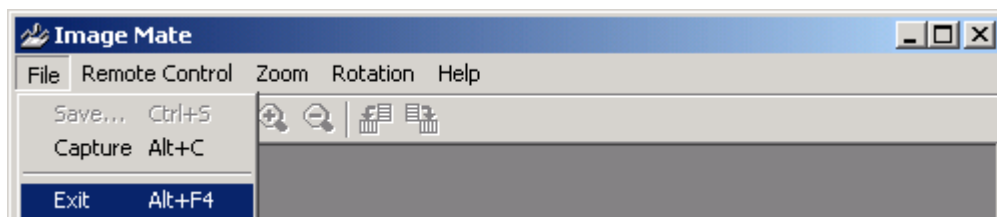
\*\*\* Operation from the main unit will have no effect upon the Input Selector while it is displayed.

## Closing the application

### Closing the application

Please save the captured image before closing the application.

1. Select [File] > [Exit] in the Menu Bar.



## Transferring images to an application program (TWAIN interface)

### Selecting a data source

The ELMO TWAIN DS (VHJ) is not a stand-alone application program. It is started from within a TWAIN-compliant application. When selecting a data source or device (fig.1), you will need to select the [ELMO TWAIN DS (VHJ)] (Fig.2).

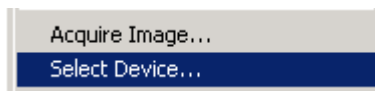


Fig.1

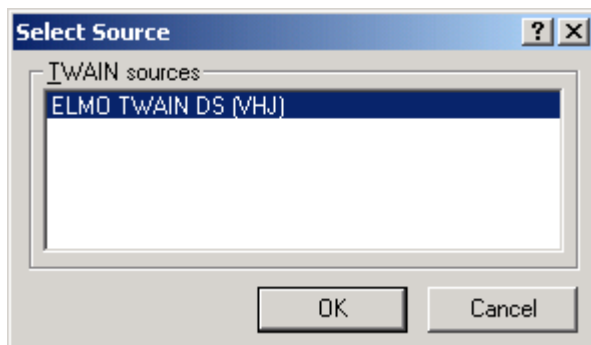


Fig.2 (a "Select Source" dialog example)

### Starting the ELMO TWAIN DS (VHJ)

From the menu of your application program, select the menu item equivalent to acquiring an image as Fig.3, then the ELMO TWAIN DS (VHJ) user interface as Fig.4 will open.

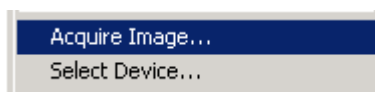


Fig.3

- \*\*\* These operations will vary among application programs.
- \*\*\* Because the Image Mate (VHJ) and the ELMO TWAIN DS (VHJ) cannot be used simultaneously, if the Image Mate (VHJ) is already started, please close it.

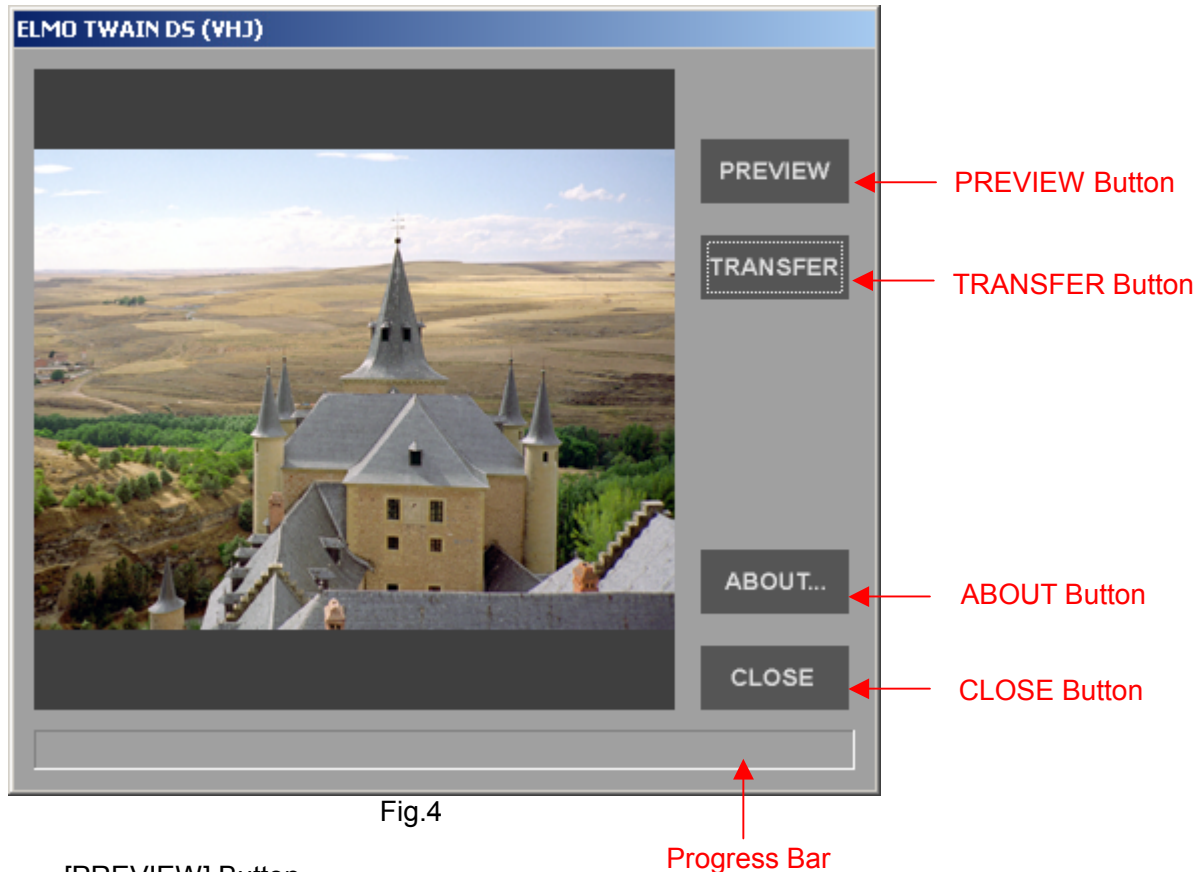
**User Interface**

Fig.4

**[PREVIEW] Button**

Loads a decimated image from the main unit and displays it on the User Interface for a preview showing the area to be captured.

**[TRANSFER] Button**

Loads an image from the main unit and transfers it to the application. After transferring, whether the User Interface is still displayed depends on the specification of the application. If the User Interface is still displayed, the transferred image is displayed on the User Interface.

\*\*\* A digital magnification cannot be applied to an image transferred.

**[ABOUT...] Button**

Displays the version and the copyright of the ELMO TWAIN DS (VHJ).

**[CLOSE] Button**

Closes the ELMO TWAIN DS user interface dialog.

**Progress Bar**

Displays the progress when capturing a new image.



## Troubleshooting

### Image Mate (VHJ) and ELMO TWAIN DS (VHJ)

**The message “The Image Mate or the ELMO TWAIN DS is already launched.” is displayed.**

Cause : The Image Mate (VHJ) or the ELMO TWAIN DS (VHJ) is already launched.

Solution : Use the Image Mate (VHJ) already launched or close the ELMO TWAIN DS (VHJ) user interface.

**The message “Out of memory” is displayed.**

Cause : Memory to be allocated for the Image Mate (VHJ) or the ELMO TWAIN DS (VHJ) is insufficient.

Solution : Close other programs that are not being used or delete unnecessary drivers.

**The message “The Image Mate or the ELMO TWAIN DS is used by the other user.” is displayed.**

Cause : The other user, with the Fast User Switching feature of Windows® XP, uses the Image Mate (VHJ) or the ELMO TWAIN DS (VHJ).

Solution : Wait for the other user to close the Image Mate (VHJ) or the ELMO TWAIN DS (VHJ).

### Image Mate (VHJ)

**The message “Not enough space to save the image.” is displayed.**

Cause : The free space of the disk drive is insufficient.

Solution : Check the free space of the disk drive.

**After capturing an image, that image is not displayed in the View Area.**

Cause : Due to lack of resources of operating system.

Solution : Close other programs that are not being used or delete unnecessary drivers.  
Or restart the Image Mate.

### ELMO TWAIN DS (VHJ)

**An application program displays error messages. Or the ELMO TWAIN DS (VHJ) dialog is not displayed.**

Cause 1 : The main unit is not ready.

Solution : Check the power for the main unit and the connection between the main unit and the computer.

Cause 2 : The Image Mate (VHJ) is running.

Solution : Close the Image Mate (VHJ).

**The [PREVIEW] or [TRANSFER] button is clicked, but no image is displayed in the window or no image is transferred.**

Cause 1 : After the ELMO TWAIN DS (VHJ) dialog is displayed, the connection between the main unit and the computer is closed.

Solution : Check the connection between the main unit and the computer.

Cause 2 : Due to lack of resources of operating system.

Solution : Close other programs that are not being used or delete unnecessary drivers.  
Or restart the application that uses the ELMO TWAIN DS (VHJ).

### **Tested TWAIN-compliant applications**

- Imaging for Windows (available only for Windows® 98/2000/Me)
- Adobe Photoshop 7
- Jasc Paint Shop Pro 7

### **Trademark Acknowledgment**

- Image Mate is a trademark or registered trademark of ELMO CO., LTD.
- ELMO and VISUAL PRESENTER are trademarks or registered trademarks of ELMO CO., LTD.
- Adobe and Photoshop are trademarks or registered trademarks of Adobe Systems Incorporated.
- Jasc and Paint Shop Pro are trademarks or registered trademarks of Jasc Software, Inc.
- Microsoft and Windows are trademarks or registered trademarks of Microsoft Corporation in the U.S. and/or other countries.
- Other product and corporate names not mentioned above may be trademarks or registered trademarks of their respective companies.

### **Disclaimer**

- The contents of this manual, the Image Mate (VHJ) and the ELMO TWAIN DS (VHJ) are subject to change without prior notice.
- ELMO CO., LTD. cannot be held responsible for either direct or indirect damages suffered by users while using the Image Mate (VHJ) and the ELMO TWAIN DS (VHJ).
- The results of using the ELMO TWAIN DS (VHJ) with untested TWAIN-compliant applications are not guaranteed.

**The sample screens shown in this instruction manual may not be the same as those you see while using the Image Mate (VHJ) and the ELMO TWAIN DS (VHJ).**